

iShade

ENVIROSCREEN

INTEGRATED STYLE AND PROTECTION



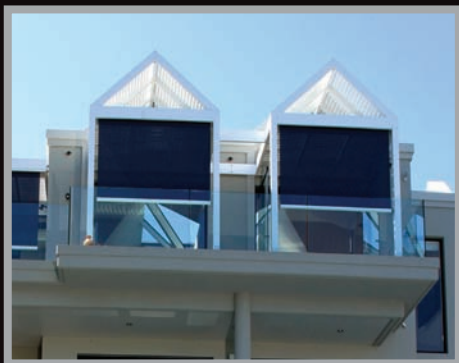
iShade Systems - The pleasure of being at one with quality, style and the environment.

ENVIROSCREEN

SLEEK. INTELLIGENT. PROTECTION.

iShade

EXTERNAL AND INTERNAL RETRACTABLE TENSION SCREENS



With its modern lines and sleek designs, the iShade EnviroScreen is a stunning solution for both indoor and outdoor protection from the heat, glare and UV rays, whilst minimising the impact from the wind and rain. Inconspicuously designed and using the latest in technology, EnviroScreens retract unobtrusively away into a neat slimline headbox.

Fitted with beautiful high quality see-through screens, EnviroScreen ensures that your views are unobstructed, whilst permitting both natural light and fresh air to filter and circulate through. Create a cool living environment over summer, add winter warmth, protect your furniture and interiors or just enjoy the privacy, EnviroScreen is a beautiful addition to any building.

YOUR ECO FOOTPRINT

EnviroScreens help reduce your energy consumption by reducing the need for air conditioners and heaters ...all with the touch of a button or using a smooth manual crank.

WARRANTY

We stand by our quality and technology. iShade offers a five year warranty on all products and accessories.

SPECIFICATIONS

APPLICATION	Verandas, Pergolas, Balconies, Semi-Open Spaces
SIZES	Min Width: 500mm Max Width: 6000mm Max Drop: 4300mm Max Area: 18m ² (depending on fabric choice)
HEADBOX	135mm (h) x 135mm (d)
GUIDES	Stainless steel wire or track Standard for motorised systems Optional for manual systems
BOTTOM BAR	Weighted round tube 65mm (non guided systems have no weight)
OPERATION SELECTION	Manual crank (removable external crank handle) Motorised RTS (remote control) Motorised hardwired
FRAMEWORK	Aluminum frames Galvanised fabric tube
FASTENERS	Stainless steel bolts, nuts and screws
FRAME FINISH	Powder Coating (All Standard Dulux and Interpon colours) Anodising (All Standard Colours) extrusions only
FABRIC CHOICE	Soltis 86%, 92%, 93%, 96%, Sunworker 90%, Acrylic 99%, Clear Plastic

CONTACT DETAILS: Your local iShade Supplier

MORE INFORMATION: info@ishade.com.au www.ishade.com.au